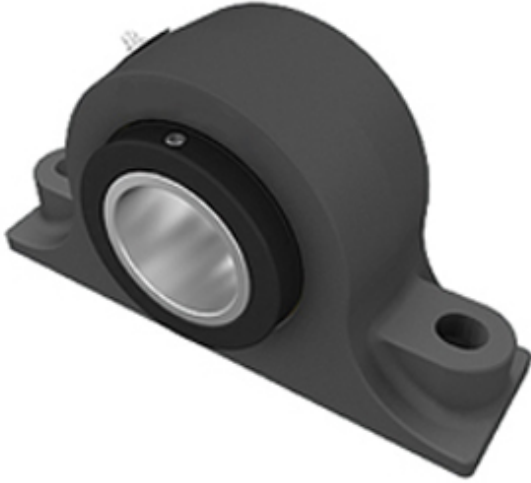




BEARING USA CORP.

2.25 Inch | 57.15 Millimeter x 4 Inch | 101.6
Millimeter x 2.75 Inch | 69.85 Millimeter TIMKEN
E-P2B-TRB-2 1/4 Pillow Block Bearings



E-P2B-TRB-2 1/4 Bearing 2D drawings and 3D CAD models

Bearing No. E-P2B-TRB-2 1/4

Category	Pillow Block Bearings
Inventory	0.0
Manufacturer Name	TIMKEN
Minimum Buy Quantity	N/A
Weight	10.9
EAN	0053893587431
Product Group	M06288
Number of Mounting Holes	2
Mounting Method	Concentric Collar
Housing Style	2 Bolt Pillow Block
Rolling Element	Tapered Roller Bearing
Housing Material	Cast Iron
Expansion / Non-expansion	Non-expansion
Mounting Bolts	5/8 Inch
Relubricatable	Yes
Seals	Double Lip Radial
Housing Configuration	1 Piece Solid
Inch - Metric	Inch
Other Features	Double Row Wide Inner Race With Set Screw
Long Description	2 Bolt Pillow Block; 2-1/4" Bore; 2-3/4" Base to Center Height; Concentric Collar Mount; Tapered Roller Bearing; 8-3/8" Minimum Bolt Spacing; 8-5/8" Bolt Spacing Maximum;



BEARING USA CORP.

	Relubrica
Category	Pillow Block
UNSPSC	31171511
Harmonized Tariff Code	8483.20.40.80
Noun	Bearing
Keyword String	Pillow Block
Manufacturer URL	http://www.timken.com
Manufacturer Item Number	E-P2B-TRB-2 1/4
Weight / LBS	24
Bolt Spacing Maximum	8.625 Inch 219.075Millimeter
Nominal Bolt Center to Center	8.5 Inch 215.5 Millimeter
D	4 Inch 101.6 Millimeter
Actual Bolt Center to Center	0 Inch 0Millimeter
Bolt Spacing Minimum	8.375 Inch 212.725Millimeter
d	2.25 Inch 57.15 Millimeter
B	2.75 Inch 69.85 Millimeter
Shaft Size	2.25 in
Shaft Size Type	Imperial
Weight	24.000 lb
UPC Code	053893587431
Dimension B	4 in
Dimension L	10-1/2 in
Dimension A	2-7/8 in
Dimension J Min.	8-3/8 in
Dimension J Max.	8-5/8 in
Bolt Diameter	5/8 in
Dimension N	3/4 in
Dimension N ₁	7/8 in
Dimension H ₁	1-5/8 in



BEARING USA CORP.

Dimension H ₂	5-23/32 in
Dimension d ₁	4-1/16 in
Dimension H	2-3/4 in
e	0.40
X (if F _a /F _r ≤ e)	0.87
Y (if F _a /F _r ≤ e)	2.17
X (if F _a /F _r > e)	0.7
Y (if F _a /F _r > e)	2.63
K Factor	1.51
C ₉₀ Dynamic Load Rating ¹	11600 lb
C ₀ Static Load Rating	54000 lb
F _{a-max} Maximum Permissible Thrust Load ²	3454 lb
F _{r-max} Maximum Allowable Slip Fit Radial Load ³	9500 lb
Max. Speed ⁴	2420 rpm
Note	Note: All units have a 1/8 pipe thread grease fitting The Maximum Permissible Thrust Load applies to conditions of slip fit with set screw mounting or in applications where a large moment loading occur